



# RAINE CHONG GIBSON

## PART 2 ARCHITECTURAL DESIGNER

- ☎ 07401970606
- 📍 Saltcoats, United Kingdom
- ✉ raineis@live.com
- 📄 Full clean UK Driving License
- 📄 References upon request

Architecture carries a responsibility to both communities and the environmental systems that support them. My approach centres on meaningful community engagement, ensuring diverse voices shape socially responsive and inclusive design outcomes. I am committed to sustainable practice at every stage, prioritising low-carbon strategies, responsible materials, circular-economy principles, and biodiversity enhancement. As a designer and steward, I aim to create places that support wellbeing, minimise environmental impact, and contribute to long-term social and ecological resilience.

## LANGUAGE SKILLS

- ✓ English (Proficient)
- ✓ Mandarin (Moderate)

## TECHNICAL SKILLS

- ✓ Adobe Suite
- ✓ Microsoft Office
- ✓ Sketchup
- ✓ Lumion
- ✓ Revit
- ✓ Archicad
- ✓ AutoCAD

## WORKPLACE SKILLS

- ✓ Architectural Design
- ✓ RIBA Stages 1-4
- ✓ BIM Model Management
- ✓ Project Management
- ✓ CPD Organisation
- ✓ Design Coordination
- ✓ Web Design
- ✓ Report Design

## AWARDS

-  **Honourable Mentioned**  
*International Council of Architects & Designers (ICIAD) 2008*
-  **Director's List**  
*Temasek Polytechnic 2007*

## PROFESSIONAL EXPERIENCE

### ARCHITECTURAL ASSISTANT

*BMJ Architects | 2021 – current*

I contributed to the design and delivery of architectural projects across multiple RIBA stages, producing drawings, 3D models, and presentation materials for planning and client submissions. I became closely involved in BIM workflows, developing a strong interest in BIM coordination and digital project delivery. My role also included preparing and coordinating NBS specifications, developing stage reports, and supporting technical documentation while collaborating with consultants to ensure design intent and project requirements were effectively communicated.

### EXECUTIVE ARCHITECT DESIGNER

*RSP Architects | 2018 - 2021*

Upon being promoted to Executive Architectural Designer, I led design development, mentored graduate architects, and coordinated multidisciplinary teams, while chairing consultant meetings, managing external consultants, and liaising with clients to ensure project objectives and design intent were delivered.

- ✓ Leading design development for Planning
- ✓ Authority Submissions
- ✓ Compliance Check
- ✓ Consultant Team liaison
- ✓ Chairing meetings
- ✓ Project Planning
- ✓ Program Management
- ✓ Mentoring Graduates

### ARCHITECT DESIGNER

*RSP Architects | 2016 - 2018*

I contributed to architectural projects from concept to detailed design, producing drawings, 3D models, and presentation materials. With the supervision of my Director, I managed and executed Feasibility studies for design competition and BIDs for existing land sales. This included responsibilities such as

- ✓ Developing BID packages
- ✓ Developing feasibility studies for land sales
- ✓ Developing design proposals for competitions
- ✓ Managing Design Team

### ASSISTANT DESIGNER

*Aedas Singapore | 2014 - 2016*

As assistant designer, I supported the design of large-scale mixed-use projects, producing drawings, 3D models, and visualisations during concept and schematic stages. I also assisted with design presentations, competition materials, research, and consultant coordination to support project proposals. My Responsibilities included:

- ✓ Architectural Design
- ✓ Space Planning
- ✓ CAD Designer
- ✓ Artist Visualisations
- ✓ Compiling design package
- ✓ Managing design process

## ACADEMIC

### PG DIPLOMA IN ARCHITECTURE

*Glasgow School of Art | 2025 – current*

Made the decision to return to university to complete my RIBA part 2 to finally finish my Architecture journey. Going back to university as a mature student sparked new found interest in Legislation, Fire and Health Safety in buildings.

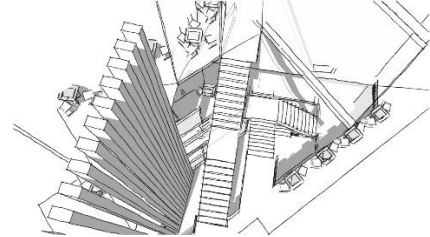
### BACHELOR OF ARCHITECTURE

*Glasgow School of Art | 2009 – 2014*



### DIPLOMA IN INTERIOR ARCHITECTURE DESIGN

*Temasek Polytechnic | 2006 – 2009*



## AFFILIATIONS

### ROYAL INSTITUTE OF BRITISH ARCHITECTS

*Student member  
2025 – current*

### PEOPLE'S ASSOCIATION PARTY

*Activist & Volunteer  
2016-2021*

## OTHER NOTABLE PROJECTS

- **ICL Future Labs**  
*London, UK*
- **KCL Strand**  
*London, UK*
- **Animal Facility**  
*Glasgow, UK*
- **Beatson Institute**  
*Glasgow, UK*
- **PHL ExtraCare Telford**  
*Telford, UK*
- **Kevinhall Hanterson Refurbishment**  
*Glasgow, UK*
- **IMI Southampton General Hospital**  
*Southampton, UK*
- **Novotel @ Hoe Chiang Road**  
*Singapore*
- **Mandai Rainforest**  
*Singapore*
- **Mandai Bird Park**  
*Singapore*
- **Samaya Residential**  
*Navi Mumbai, India*
- **Santacruz Residential Development**  
*Mumbai, India*
- **TDI Luxury Residential**  
*New Dehli, India*
- **Sarapurung Jaipur Residential**  
*Jaipur, India*
- **"Mannat SantaCruz Mumbai" Residential Development**  
*Mumbai, India*
- **Pradahevi Sales Gallery**  
*Mumbai, India*
- **"The Oasis" Business Bay Mixed-Used Development**  
*Dubai, UAE*
- **"Supertech" Hues Group Housing**  
*Gurgaon, India*
- **"Somani Mumbai" Mixed Used Development**  
*Mumbai, India*
- **Gulshan Residential Hotel, Residential and Office Development**  
*Dhaka, Bangladesh*
- **Aberdeen Exhibition Center**  
*Arberdeen, UK*
- **Punggol Catholic Church**  
*Singapore*
- **Bishan Nursing Home**  
*Singapore*
- **Altez/Icon Village**  
*Singapore*

## FEATURED PROJECTS

### DARWIN BIOLOGY LABORATORY

*University of Edinburgh | 2023 – current*

Contributed to the bid, design, and development of the New Darwin Bioscience Hub, a state-of-the-art research and teaching facility. Played a key role in shaping flexible laboratories, teaching spaces, and collaborative zones. Developed expertise in NBS specifications and BIM model management, and led design coordination between interior designers, MEP engineers, and structural engineers to deliver a fully integrated and future-proof model. Collaborated closely with stakeholders to ensure the building's aesthetic, functional, and sustainable design, supporting cutting-edge research, interdisciplinary collaboration, and public engagement.



### EXTRA CARE HOME NOTTINGHAM

*Hucknall, England | 2021 - current*

Assisted in the design and delivery of a modern care home, contributing to BIM model development, detailed design drawings, and tender documentation. Supported the construction phase with drawing clarifications and contractor liaison, ensuring design intent was maintained on site. Developed strong expertise in technical detailing, multidisciplinary coordination, and BIM-based design workflows, helping deliver a high-quality, functional, and future-proof care facility.



### GRAND HYATT HOTEL

*Singapore | 2019 - 2021*

Led the design coordination for the refurbishment of the Grand Hyatt Hotel, managing collaboration between architects, interior designers, and MEP teams to ensure a fully integrated and high-quality design. Conducted site surveys and drawing clarifications, worked closely with the project manager to maintain a smooth project workflow. Oversaw the authority submission process, ensuring compliance with local regulations and timely approvals. Developed strong skills in multidisciplinary coordination, regulatory compliance, and high-profile project management on a prestigious hospitality project.

### HOLLAND VILLAGE EXTENSION

*Singapore | 2017 - 2018*

Led the winning submission for the Holland Village Extension, a mixed-use development comprising a commercial village, residential zone, and additional commercial areas. Directed the design process and development of the design package, coordinating multidisciplinary teams to ensure a cohesive and high-quality proposal. Curated the overall concept and design vision for the client, translating strategic objectives into a functional, engaging, and visually compelling masterplan. Developed expertise in conceptual design, stakeholder engagement, project leadership, and integrated urban development.



### ESPLANADE WATERFRONT THEATRE

*Singapore | 2017 - 2018*

Contributed to the design entry for a proposed waterfront theatre in collaboration with Arup, integrating acoustical principles to influence spatial planning and enhance performance quality. Developed the design with a focus on circular economy principles, reflecting environmental advocacy while promoting arts accessibility for youth. Gained valuable experience in sustainable design, acoustical integration, and interdisciplinary collaboration, strengthening skills in conceptual development and socially-conscious architectural design.

